

BRIDGE COTTAGE

BRADFORD-ON-AVON, WILTSHIRE, NEAR BATH

**a self-catering holiday cottage - at the gateway to Thomas Hardy's Wessex
- perfect for visiting Jane Austen's Bath and exploring the West Country -
(M4 only 12 miles)**

**close to the railway station for direct trains to London, Bristol, Salisbury,
Weymouth & Bath**



[Click here to view and print this page as a PDF file](#)

Self-catering accommodation:

This little holiday let offers charming & comfortable accommodation, for up to four people. It is just 2 minutes walk from the station and 3 from the centre of the ancient Wiltshire town, Bradford-on-Avon. (Bath is 15 minutes away! - cottage post-code for sat-navs is BA15 1DD)

It is a 19th century, south-facing, two-storey house. Constructed from locally quarried stone, it has many period features, including a panelled hall & an ancient fireplace in the kitchen, yet it has a spacious, light and airy feel. It is provided with all the modern amenities you would expect, including a well-appointed kitchen & bathroom and central heating.

Downstairs, through the entrance hall, are a good sized kitchen & dining room combined and a separate sitting room. Upstairs are two double bedrooms and a separate bathroom.



. . .DOWNSTAIRS



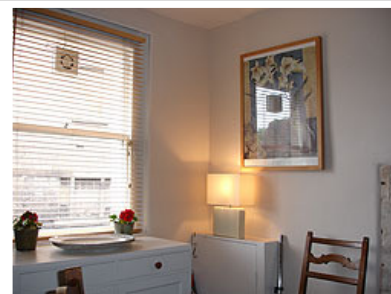
Sitting Room

This cosy room was designed with evenings in mind! Rugs, thick curtains, original window shutters and flame effect gas fire – are an invitation to make yourself at home. As well as two comfy sofas and antique furniture, a TV and DVD player are also provided, plus maps games, books and guides for you to borrow...



Kitchen/Diner

With polished oak flooring throughout, this room offers a welcoming combination: a modern fully fitted kitchen, with island unit, and spacious dining room with period furniture & original fireplace. South facing windows let the sun in most of the day so it's a great place to relax, cook & socialise!



UPSTAIRS . . .

Bedroom One

South facing and sunny, with two windows, twin single

beds, wardrobe and chest of drawers. A subtle blend of modern colour and painted furniture, create calm and comfort.



Upstairs Landing

Light and charming with original window seat with roofscape views. The landing includes generous walk-in storage for luggage, walking gear etc.



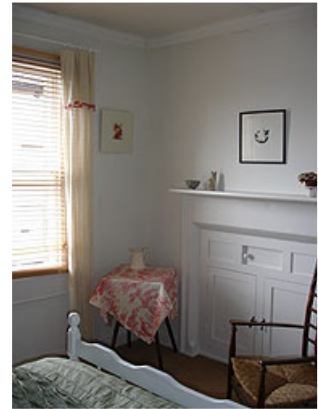
Bathroom

Neat, bright, immaculate with combined shower/bath, w.c. and pedestal sink.



Bedroom Two

Also south facing, charming period features, furnished with painted period furniture including dressing table, chest, and double bed.



Rental Terms

Gas, electricity, bed linen, towels and tea-towels are included in rent. Travel cot and high-chair are available for a small fee. Pets welcome, subject to prior agreement & damage deposit of £100. No smoking.

Prices

Weekly lets from £280 - £495.

Bookings are normally Saturday to Saturday. Short breaks available(2-6 nights), booked 2 weeks prior to stay, or in off-peak weeks.

Bookings. . . for a week, a fortnight, a short break . . . are easy! Just phone Nicky Gane on 01225 866129 or e-mail us at timgane@tiscali.co.uk.

We live in the town and are always happy to give information and try to accommodate your needs. We'll post or e-mail a booking form to you & then reserve the cottage pending your reply.

If you prefer, write to 46 Winsley Road, BRADFORD-ON-AVON, BA15 1NT, UK



Also available, on Bed & Breakfast or Self-Catering terms, **studio flat** for 2 : adjacent parking, own garden terrace, all mod-cons. Winsley side of Bradford-on-Avon, on bus-route to Bath. Full B&B from £62; Continental Breakfast from £55; Self-catering £35-£55.* To find out more click on [The Garden Flat](#)

***winter discount available**
e-mail or 'phone for information or booking form

[country cottages](#)